

По вопросам продаж и поддержки обращайтесь: btn@nt-rt.ru

www.bently.nt-rt.ru

Архангельск (8182)63-90-72,
Астана+7(7172)727-132,
Белгород(4722)40-23-64,
Брянск(4832)59-03-52,
Владивосток(423)249-28-31,
Волгоград(844)278-03-48,
Вологда(8172)26-41-59,
Воронеж(473)204-51-73,
Екатеринбург(343)384-55-89,
, Иваново(4932)77-34-06,
Ижевск(3412)26-03-58,
Казань(843)206-01-48,
Калининград(4012)72-03-81,
Калуга(4842)92-23-67,
Кемерово(3842)65-04-62,
Киров(8332)68-02-04,

Краснодар(861)203-40-90,
Красноярск(391)204-63-61,
Курск(4712)77-13-04,
Липецк(4742)52-20-81,
Магнитогорск(3519)55-03-13,
Москва(495)268-04-70,
Мурманск(8152)59-64-93,
НабережныеЧелны(8552)20-53-41,
, НижнийНовгород(831)429-08-12,
Новокузнецк(3843)20-46-81,
Новосибирск(383)227-86-73,
Орел(4862)44-53-42,
Оренбург(3532)37-68-04,
Пенза(8412)22-31-16,
Пермь(342)205-81-47,
Ростов-на-Дону(863)308-18-15,

Рязань(4912)46-61-64,
Самара(846)206-03-16,
Санкт-Петербург(812)309-46-40,
Саратов(845)249-38-78,
Смоленск(4812)29-41-54,
Сочи(862)225-72-31,
Ставрополь(8652)20-65-13,
Тверь(4822)63-31-35,
Томск(3822)98-41-53,
Тула(4872)74-02-29,
Тюмень(3452)66-21-18,
Ульяновск(8422)24-23-59,
Уфа(347)229-48-12,
Челябинск(351)202-03-61,
Череповец(8202)49-02-64,
Ярославль(4852)69-52-93

Брошюра о компании Bently Nevada



BENTLY
Nevada



A HOLISTIC APPROACH DRIVING BETTER OUTCOMES

GE's Bently Nevada Condition Monitoring Product Line



IT'S NOT JUST A SOLUTION. IT'S A PARTNERSHIP.

GE is committed to helping you solve your greatest operational challenges. By understanding your business and equipment, we work with you to deliver the most relevant technology and service offerings. Through our deep equipment expertise and ongoing technology investments, we offer solutions tailored to your specific needs.

WHEN PEOPLE LEVERAGE DATA FROM MACHINES, PERFORMANCE IS POSSIBLE.



An offshore platform saved
\$5.2 MILLION
with System 1 & Bently
Performance



A coal fired plant diagnosed
rotor degradation, avoiding
250 DAYS
of downtime with System 1 & 3500
Series Equipment Protection Systems



A Large refinery with an onsite
power generation facility saved
\$1 MILLION
with System 1 & 3500 Series
Equipment Protection Systems



A petroleum refinery saved
\$5 MILLION
with System 1 & 3500 Series
Equipment Protection Systems

ONE SOLUTION. ENDLESS POSSIBILITIES.

GE's Bently Nevada machine condition monitoring solutions combine advanced hardware, intelligent software, and trusted service and support – providing a broader, connected view of your operations. Together, they enable you to mitigate risk, boost safety, and reduce maintenance costs, all while improving equipment reliability, uptime, and efficiency.

HARDWARE

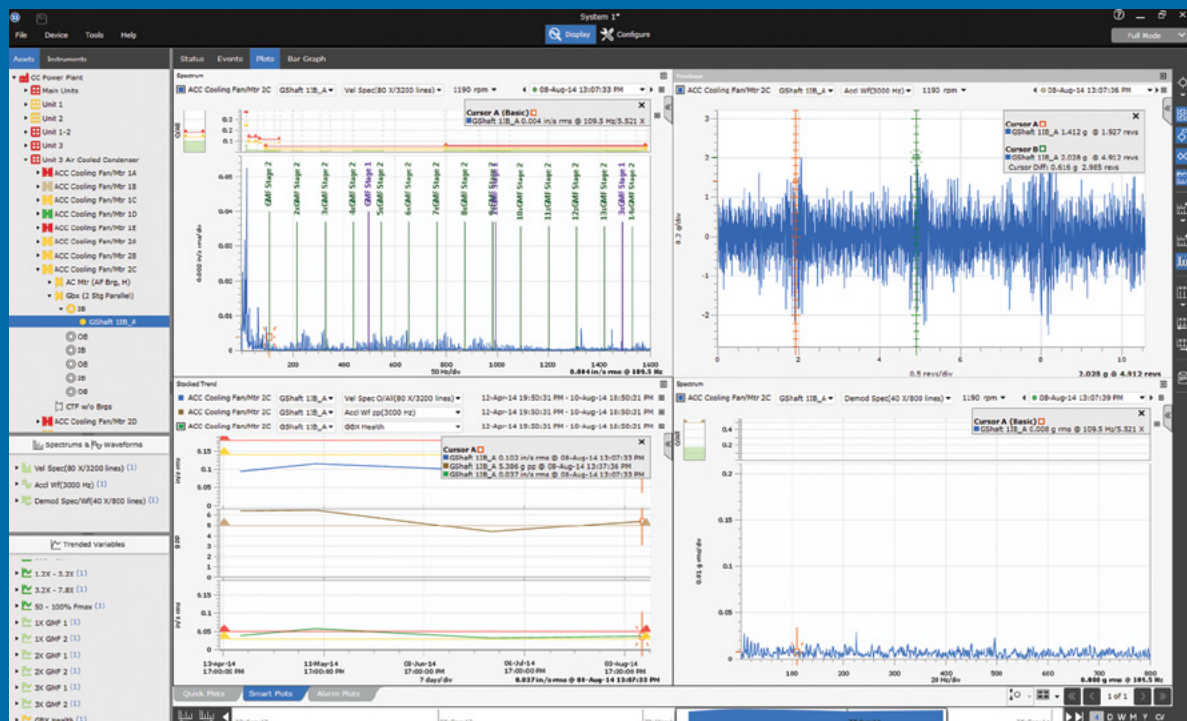
Monitoring systems and sensors protect your equipment and collect rich condition monitoring and diagnostic data for analysis.

SOFTWARE

System 1 software connects real-time and historical data from any type of equipment to help you anticipate failure before it occurs.

SUPPORT

Scalable deployment and ongoing support service offerings help ensure that you're maximizing the value of your condition monitoring program.



MAXIMIZING THE POWER OF YOUR DATA FOR SMARTER DECISIONS.

From highly critical to less critical equipment, our technology enables better data collection and improved insights across your operations.



HIGHLY CRITICAL EQUIPMENT

Unplanned downtime is the greatest threat to your operations. Avoid major shutdowns, ensure safety, and minimize downtime with industry-proven rack-based and distributed equipment protection systems. With System 1, online continuous condition monitoring and diagnostic connectivity allows you to respond to real-time operational challenges and plan for maintenance activities.



CRITICAL EQUIPMENT

Take your data-driven maintenance program to the next level by looking beyond your highly critical equipment. Continuously monitor critical plant wide equipment with cost-effective, basic protection and scanning devices designed to monitor a broad range of equipment. Connect these devices to System 1 to expand your condition-based maintenance program.



LESS CRITICAL EQUIPMENT

Periodically monitor your less critical equipment with a portable vibration program. Choose from a suite of devices with a range of hazardous area ratings, including Intrinsically Safe (IS) handheld devices, and manage your program with System 1 to enable condition-based maintenance.

GE'S SYSTEM 1 SOFTWARE. DRIVING AN INTELLIGENT ASSET STRATEGY.

GET OPTIMIZED
Expand Connectivity,
Monitoring, and Analytics

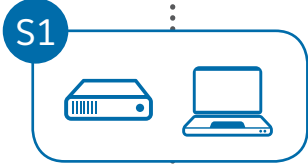


Enterprise Server
(Premise or Azure/AWS)
Centralized, Accessible
Enterprise Condition
Monitoring & Diagnostics

Business Network

CYBER SECURITY

GET INSIGHTS
Capture & Store Data
to Monitor Equipment

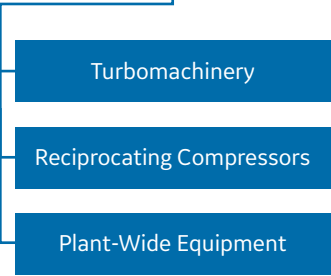


Plant Server
(Premise)
Condition Monitoring
& Real-Time Diagnostics

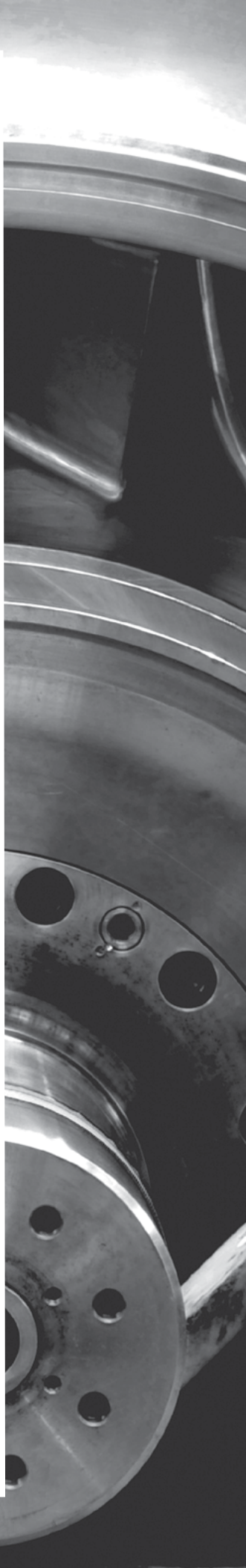
PROCESS DATA
&
MECHANICAL DATA

Process Network

GET CONNECTED
Understand Plant
and Equipment



**Equipment,
Monitors & Sensors**



DECADES OF EXPERIENCE, WHEN AND WHERE YOU NEED IT.

You need to get the most out of your production equipment while lowering operating and maintenance expenses. We'll work with you to accomplish that goal. Our Supporting Service Agreements (SSAs) range from installation assistance to 24/7 remote monitoring to onsite condition monitoring program management, designed to maximize the value of your investment in condition monitoring technology.

3,500+
SYSTEM 1 SOFTWARE
LICENSES WORLDWIDE

135+
EQUIPMENT DIAGNOSTIC
ENGINEERS WORLDWIDE

160+
SYSTEM 1 CERTIFIED
FIELD ENGINEERS



GE innovations have been moving industry forward for over a century. Today our machines are smarter than ever, with thousands of sensors that provide us with unprecedented quantities of data. We're committed to utilizing the full potential of that data with digital solutions that help our customers solve some of their biggest problems. The next phase of the Industrial Internet is here, and GE is leading the way.



По вопросам продаж и поддержки обращайтесь: btn@nt-rt.ru

www.bently.nt-rt.ru

Архангельск (8182)63-90-72,
Астана+7(7172)727-132,
Белгород(4722)40-23-64,
Брянск(4832)59-03-52,
Владивосток(423)249-28-31,
Волгоград(844)278-03-48,
Вологда(8172)26-41-59,
Воронеж(473)204-51-73,
Екатеринбург(343)384-55-89
, Иваново(4932)77-34-06,
Ижевск(3412)26-03-58,
Казань(843)206-01-48,
Калининград(4012)72-03-81,
Калуга(4842)92-23-67,
Кемерово(3842)65-04-62,
Киров(8332)68-02-04,

Краснодар(861)203-40-90,
Красноярск(391)204-63-61,
Курск(4712)77-13-04,
Липецк(4742)52-20-81,
Магнитогорск(3519)55-03-13,
Москва(495)268-04-70,
Мурманск(8152)59-64-93,
НабережныеЧелны(8552)20-53-41
, НижнийНовгород(831)429-08-12,
Новокузнецк(3843)20-46-81,
Новосибирск(383)227-86-73,
Орел(4862)44-53-42,
Оренбург(3532)37-68-04,
Пенза(8412)22-31-16,
Пермь(342)205-81-47,
Ростов-на-Дону(863)308-18-15,

Рязань(4912)46-61-64,
Самара(846)206-03-16,
Санкт-Петербург(812)309-46-40,
Саратов(845)249-38-78,
Смоленск(4812)29-41-54,
Сочи(862)225-72-31,
Ставрополь(8652)20-65-13,
Тверь(4822)63-31-35,
Томск(3822)98-41-53,
Тула(4872)74-02-29,
Тюмень(3452)66-21-18,
Ульяновск(8422)24-23-59,
Уфа(347)229-48-12,
Челябинск(351)202-03-61,
Череповец(8202)49-02-64,
Ярославль(4852)69-52-93



BENTLY
Nevada